

V300HD User Manual



WINY Technology Co., Ltd.

<http://winycam-eng.com>

Contents

Precautions

- Precautions for safety when using the product	3p
- Precautions when using a SD card	4p
- Precautions when using a Battery	5p
1. Package	6p
2. Product Features	7p
3. Function	8p
4. How to Install	9p
5. How to Record	10p
6. LED Operation Guide	11p
7. Voice Guide	12p
8. How to Install Original Viewer Program	13p
9. Original Viewer - Screen Configuration	14p
9-1. Original Viewer - Playback	15p
9-2. Original Viewer – GPS	16p
9-3. Original Viewer – Configuration	17p
9-4. Configuration Default Settings	19p
10. Play and set the configuration by smartphone	20p
11. Firmware Update	21p
12. SD card Format	21p
13. Specification	22p
14. Recordable Time	22p

Warranty

Precautions for safety when using the product

1. Please do not operate the product during driving. It may cause accidents.
2. Please install the product in a place not to interfere with a driver's view.
3. Do not disassemble or convert the product intentionally. It may lead to product failure and the responsibility for the damage to the product resulting from this shall be borne by the user.
4. When damage to the product itself occurs due to a major accident or the power is disconnected, images of the accident may not be recorded.
5. Please keep the windshield clean at portion of recording before recording.
6. Since this product is a device that records a driving video by using the camera, the image quality may drop when entering the tunnel, in shading contrast, backlight and photometric conditions, and the middle of the night.
7. In case those foreign objects attach to camera lens, recorded video may not be in good condition. Please keep the lens clean.
8. Do not leave a product in a place exposed to the direct sunlight in a car or in a confined car. It may cause a malfunction.
9. Do not wipe the product using chemicals, detergents, etc., but wipe it lightly using a soft cloth.
10. The thermal environment at below -5°C or over 55°C may cause a malfunction or failure of the product. (When not using the product, please be careful about storage temperature)
11. Do not use the product in a place at high temperature or much moisture.
12. Do not press excessive force to the products (especially buttons and bracket). It may cause a malfunction of the products.
13. Before using the product, make sure to operate it for 3 to 5 minutes and verify that the image saved properly and then use it.
14. If the product is in prolonged exposure to sunlight or high temperatures during the summer, normal operation can be difficult.
15. When firmware upgrade is in progress, if SD card is removed or a power is disconnected, failure of the product may occur, so should be careful.
16. When removing or disconnecting the cigarette lighter cable, it may result in electric shock, so do not touch it with wet hands.
17. Do not use the damaged cigarette lighter cable. It may cause fire and electrical shock.
18. Do not leave the cigarette lighter cable or the product near heating equipment.
19. When not using the product for the long-term, please separate off the cigarette lighter cable from the product.
20. Please plug the cigarette lighter cable correctly and should not be shaken.
21. Do not bend or pull the cigarette lighter cable forcefully or avoid placing heavy objects on the cigarette lighter cable. (A damaged power cord may cause fire or electric shock)
22. Even if overwrite function is in 'Off' condition, a part of recorded file may be deleted to create some recording space at booting.
23. In the lower frame setup, the event may not be recorded. For the stable event recording, recording setup is greater than or equal to 15 frames is recommended.

Precautions when using a SD card

1. In order to confirm normal operation of the product, please check the image of a SD card and format it on a regular basis.
(PC format needed one to two times per month)
2. Because an SD card is consumables, if it is used for a long time, you may lose the data or may not record due to an error, so please check it periodically.
3. When the product is in recording or the power is on, do not eject the SD card forcibly. It may cause a failure of the SD card and data loss.
4. Due to excessive temperature rise inside the car, the data may not be saved or get damaged, so please park the car in a cool place in the summer.
5. When identify the car's accident or damage, please keep the SD card separately. Due to overwrite, important data may be deleted.
6. When turn off the power of the body and remove the SD card before LED is turned off, the last recording file may not be saved, so please be careful.
7. In general, the SD card is a consumable product in life, so if it is not used for a long time, you may not be able to save the data. In this case, buy a new SD card and use it, and please always check that the recorded images and a SD card have no problems with data storage.
8. When driving a car, do not remove the SD card. Make sure to remove it safely when a car is in parking or stop.
9. After turning on the power, make sure that it is in normal operation.
10. Please note that the warranty period of an SD card is six months, and replace it at the time of more than six months.
11. The SD card randomly purchased other than the one we provide, shall be excluded from the warranty, and we shall not take any responsibility for loss and damage of the data recorded in the SD card in any case.
12. After check playback recorded video on a Smartphone (support an Android only), remove the SD Card and follow below.
Menu → Configuration → System → Mode change space → SD Card un-mounting
(if you do not "SD Card un-mounting", SD Card might be damaged.)

**# This product is assistant device for recoding driving video.
Please use this product for your reference for checking driving video,
not as special CCTV because the image might not be record depend on environment.**

This product might change without any notice for performance improvement.

This user manual indicate only basic user manual, please check furthermore detail information from <http://winycam-eng.com>

Precautions when using a Battery

※ Please follow below otherwise Heat Generate, Fire, Explosion, etc might happen.

1. Contact the manufacture or distributor if battery bellowed up even by the naked eye.
2. Use only packaged battery and do not modify and disassemble.
3. Never put this built-in battery product close to fire.
4. Do not leave product for long time inside the car in summer.
5. Use Warranted lithium polymer portable charger by manufacture.
6. Do not disassemble, crimp, destroy.
7. Do not drop from high location and give shock to product.
8. Do not leave product in location that is over 60°C.
9. Do not leave a product in the humid location.

※ Battery Disposal Instructions

Do not throw away a used battery.

When disposing of a battery, do not burn and put them in a fire. (Due to heat, it may cause an explosion or fire.)

Battery disposal may vary by country and region. (Please dispose it properly).

1. Package

Package



Body & Bracket



Car Cigar jack



Micro SD card



Card Reader



User Manual

Package



Cabling Clip 3pcs

Option Accessory



Video Cable
(Selling separately)



GPS Bracket
(Selling separately)

The viewer program is stored in Micro SD card.

Please use after saving the program in advance in the computer, etc. so that the program can't be deleted.
(If it is deleted, you can download it from our website.)

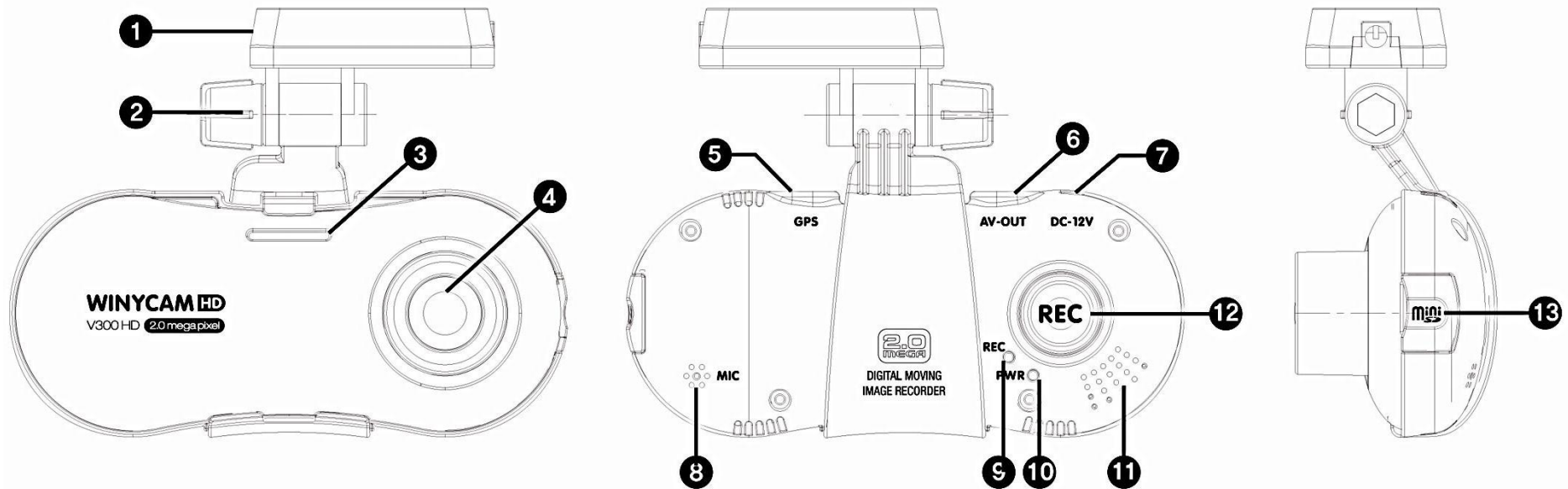
The packaged product picture of the user manual may differ from the actual product.

Video cable is used for connection to the TV / car navigation, and can monitor real-time. But please note that depend on monitors, Video input type is different and check the user manual of monitor.

2. Product Features

1.	2 Mega Pixel image sensor mounting.
2.	150 degrees (based on lens) wide mega lens (based on actual recorded video) are applied.
3.	HD (1280X720) resolution and 30FPS are supported.
4.	Security LED light are mounted on front body (LED Lighting function On/Off can be set in PC viewer)
5.	Car constant power discharge protection function (setup is available in PC viewer) is built-in. Separated power discharge safety equipment is not necessary.
6.	G sensor built-in Automatic parking recording mode change and event recording mode.
7.	Various recording functions - normal, manual, event, motion, automatic parking recording mode change.
8.	Operating instructions service by voice guidance.
9.	External video output. (real-time video image can be checked)
10.	Soft look and emotional design. (easy removable body)
11.	Driving records can be stored with GPS data. (optional)
12.	PC viewer software are provided to change various setting values and map data can be checked when using GPS. (In the general video player (e.g. Windows media player), recorded video can be played)
13.	High performance microphone built-in
14.	Back-up battery built-in (safety backup power support)
15.	Memory back-up is available by flash memory, even in the error occurred when firmware is in upgrade.
16.	When car constant power discharge functions in setup, the dark current of less than 2mA is consumed. (based on 12V)
17.	SD card can be formatted as the product itself, without connecting to a PC.
18.	When using car constant power discharge protection functions, If user car voltage is 12V and the voltage of less than 11.8V is maintained for more than 30 seconds the product power will be shuts-off. In case user car is 24V, power will be shut down after 30min with less than 24V. (Note: Shutdown time depend on the Type of Car and car condition.)
19.	Voice recording On/Off function and speaker output On/Off function.
20.	Each capacity of normal/ event/ motion folder can be set in PC Viewer.
21.	Recording image resolution can be set to change. (HD/D1/VGA)

3. Function



- | | |
|--|--------------------------------|
| 1. Bracket (GPS Bracket: Selling separately) | 8. Microphone |
| 2. Up-down adjustment screw | 9. Record LED |
| 3. Security LED | 10. Power LED |
| 4. Camera Lens | 11. Speaker |
| 5. GPS Connection | 12. Record Button (for manual) |
| 6. External Video Cable(Selling separately) | 13. Micro SD card Slot |
| 7. Power Input | |

4. How to Install



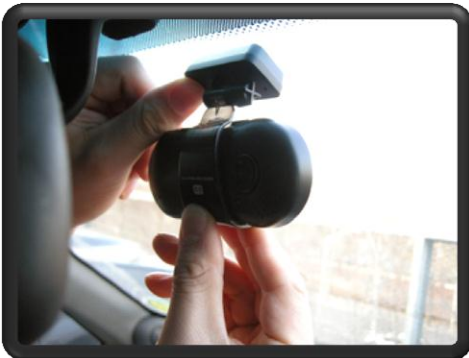
Insert the Micro SD card into the product. (Note the direction of the SD terminal)



Connect packaged cigar adapter to the power connecting terminal.



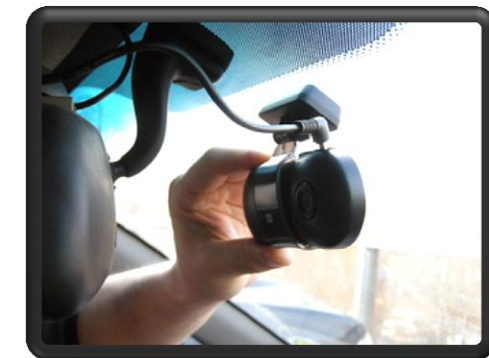
Remove protective sticker on the double-sided tape of the bracket.



Clean foreign substance in a place to attach the product first and attach the product.



Connect cigar jack to the car cigar socket.



The picture after installed

5. How to record

1. Recording: V300HD is automatically booted at power on, and recording starts in basic normal recording mode.
2. Recording Mode: it is classified into driving recording mode and parking (motion) recording mode
3. Recording Method: it is classified into normal recording, event recording, motion recording.

※ For automatic recording and manual recording methods, please refer the below table.



















Recording mode	Recording method	Auto recording method	Manual recording method (button control)	Recording time		Recording folder
Driving recording mode	Normal recording	-	-	Set on configuration 30 / 60 / 120 sec		Normal
	Event recording	In G-sensor detect Shock	One short press button	Each 15 second recording before and after event or motion occurrence	* For HD highest quality resolution only, each 15 second recording before and after event or motion occurrence	Event
Parking (motion) recording mode	Motion recording	In G-Sensor is not detected for more than 8 minutes Automatic motion recording mode change	3 second long press button			Motion
	Event recording	In G-sensor detect Shock	One short press button			Event

※ after change to parking recording mode by manual, if you want to change normal recording mode again, please press "REC" button for 3 seconds (during event recording, mode cannot be changed.)

※ Even if power is interrupted during event recording mode, 30 second can be recorded completely before power is off. (Only if built-in battery is fully charged)

※ If event (G-sensor detection and manual recording by button control) occurs during motion recording mode, After motion recording mode will be completed, the motion recording file will be changed into event recording files, and event recording mode will start immediately.

6. LED Operation Guide

Situation	Front LED Operation	Rear LED				
		REC LED	Power LED		Car Constant Power Discharge Protection On	
			Car Constant Power Discharge Protection Off		Car Constant Power Discharge Protection On	
			OFF	GPS Connect	ON	GPS Connect
Booting	Off	 Red lighting	 Red flashing			
Firmware update	Off	 Orange flashing (Green/Red)	 Orange flashing (Green/Red)			
Normal recording mode start		 Green flashing	 Green lighting	 Green flashing	 Orange lighting (Green/Red)	 Orange flashing (Green/Red)
Event recording mode standby	All flashing	 Green lighting				
Event recording mode start	 left and right LED and central LED cross-flashing	 Red flashing				
Motion/Parking on Event recording		 Orange flashing (Green/Red)				
Motion/Parking recording start	 Reciprocation flashing left and right	 Orange flashing (Green/Red)				
Motion/Parking recording standby		 Orange lighting (Green/Red)				
No SD Card (Error)	Off	Off	 Orange flashing (Green/Red)			
ETC	Off	Off	Off			

When no GPS signal or depend on GPS signal receiving location and signal condition, LED display only lightning.

7. Voice Guide

Situation	Voice Guide
Event / Motion Occur	(Alarm Tone) "Ding-Dong"
Remove SD card / SD card Error	"Please check a SD card."
Firmware Update Start	"Firmware will be updated."
Firmware Update Completed	"Firmware update has been completed."
Normal Recording Mode Start	"Normal recording will start."
* Event Recording Mode Start	"Event recording will start."
Parking Recording Mode Start	"Parking recording will start."
Recording End	"Recording will be end."
Change the Date / Time setting	"Setting has been changed."
Automatically change to Normal Recording Mode	"SD card capacity is full. Normal recording will start"
SD card Format	"Will you format your SD card?"

* Only when event recording mode is set in the configuration, the voice guiding "event recording will start" will announce.

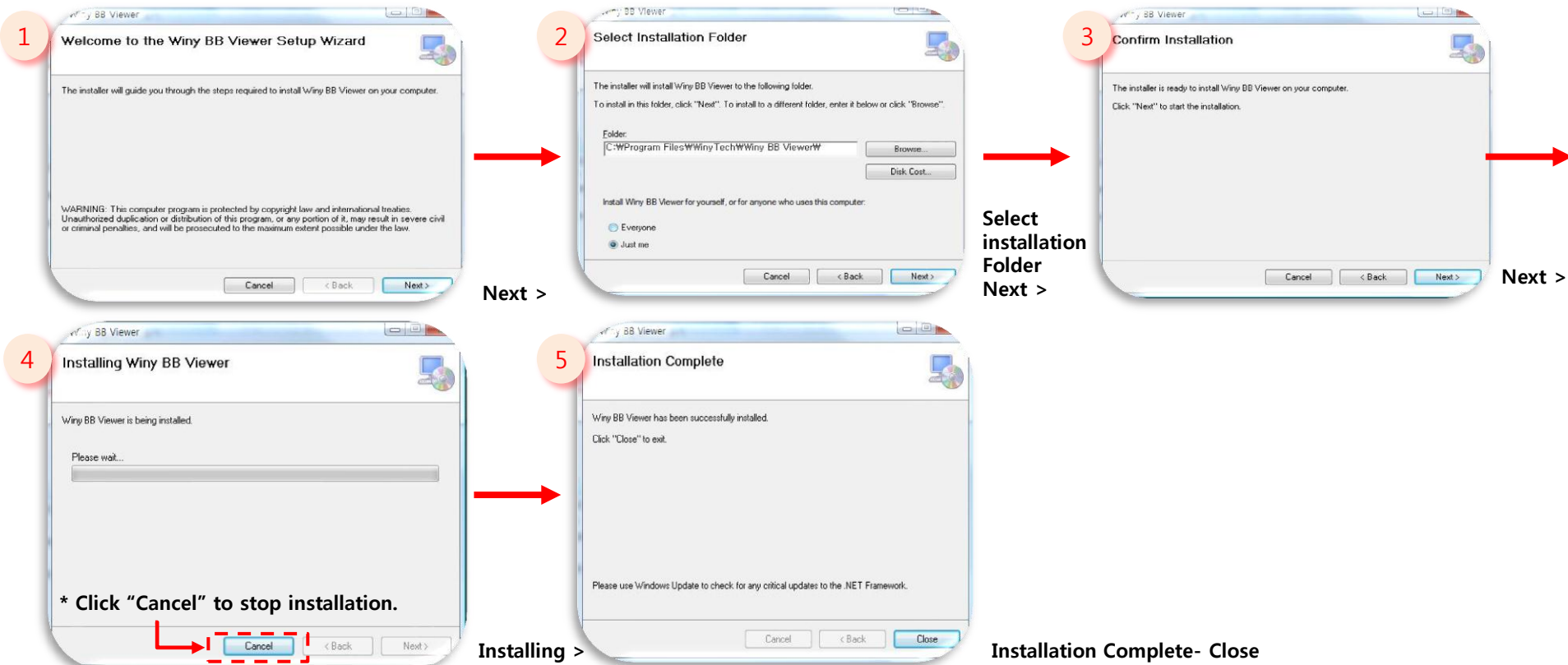
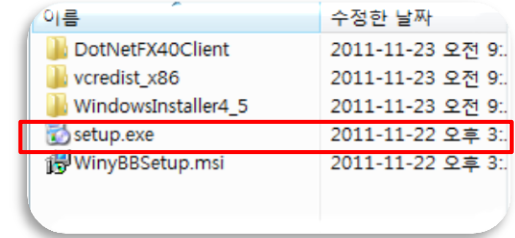
8. How to Install Original Viewer Program

1. System Requirements

- Windows XP(32bit), Windows Vista(32bit), Window7(32/64)
- Pentium 4 2.8GHz & RAM 1GB .
- 1024 * 768 Display device is set to be the primary monitor.
- DirectX Support (WPF)

2. Install

- Playback program is in packaged SD card.
- Insert this SD card into the USB card reader and connect to the computer.
- An executable file is in the SD card as below figure.
- If you run "setup.exe", Winy BB Viewer will be installed. And then, installation will be continued according to the installation sequence of setup dialog box.

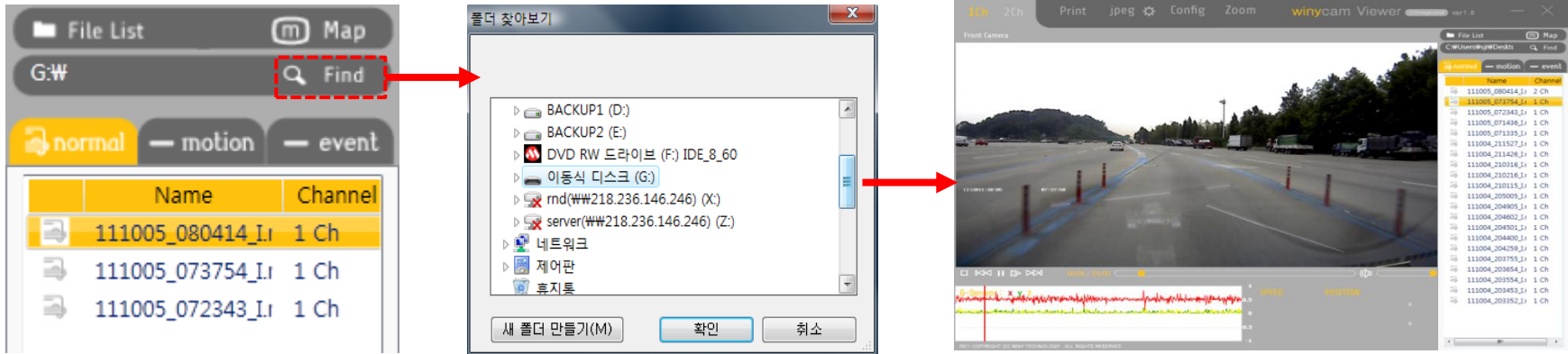


9. Original Viewer – Screen Configuration



1	[1Ch], [2Ch] Select channel and it will playback (V300HD only 1Ch support)	9	[Find] Click, to select the image to playback.
2	[Print] Print current pause screen.	10	[Normal], [Motion], [Event] Recording list, for each recording mode.
3	[Jpeg] Save current pause screen.	11	Window to playback the video. If you double-click during playback, a new window will pop up and the screen can be expanded.
4	Select saved location of current screen image.	12	Control the video. (Pause / Previous File / Play or Pause / 1 Frame Playback / Next File)
5	[Config] Set operation environment for black box.	13	Identify the current playback location of recorded images
6	[Zoom] After pausing the image, select an area to expand with the mouse and check the image.	14	Adjust the sound volume during playback.
7	[—] Click, play program will be minimized to the position of a task pad. [X] Click, the play program will be closed.	15	[G-sensor] Display information on the shock sensor detected on car during driving or parking
8	[Map] Click, GPS information will be recorded with the image and the drive location will be shown on the map, When connected to GPS module.	16	Display GPS information (speed, latitude / longitude location information)

9-1. Original Viewer - Playback



Find



Click [Find], while SD card is connected with the computer, file lists will pop up immediately, but if not connected, the window 'browse for folder' will pop up and select the location where the file is saved.

[Normal] Shows a list of normal recorded files. If the file is double-clicked, the video will be played.

To Play Recorded Video by Recording mode

[Motion] Shows parking surveillance (motion recording mode) recorded file list. If the file is double-clicked, the video will be played.

[Event] Shows event recording mode file list. If the file is double-clicked, the video will be played.

Play by Channel

After pressing 1Ch / 2Ch and changing the screen, you can playback it.

Zoom Function

In the Zoom Function, there are 2 ways with Full Zoom on the screen and Zoom of Menu Item (Partial Zoom) function.

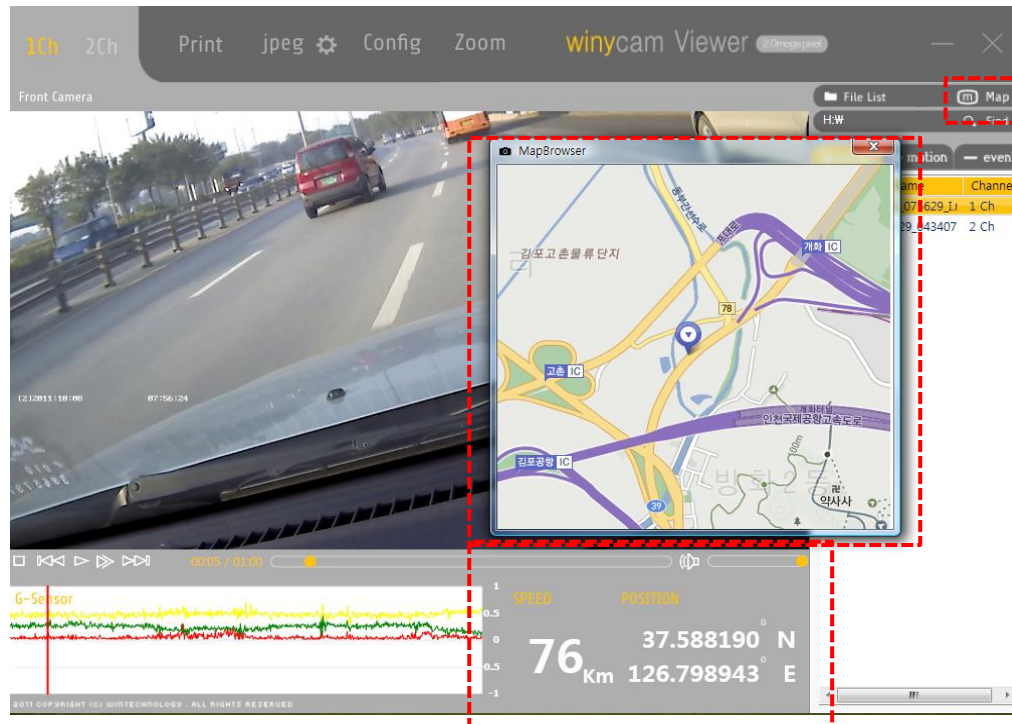
Double-click on Screen: When double-clicking on the screen, a new window will pop up and when double-clicking in a new window, the screen will be magnified.

Menu Zoom Function: If you pause the screen and specify the area that you want to enlarge with the mouse, a new window in the selected area will pop up and 4 X Zoom will be possible.

* If you want to run Print on Menu (Print), Jpeg (Image Save), Zoom (Enlargement), you should **pause** the video first and then it will be possible to operate

* Recorded images can be played back in the Windows Media Player in addition to the original viewer. (When checking GPS information, please use the original viewer only)

9-2. Original Viewer - GPS



If the external GPS module (separate option) is connected to Black Box, GPS information will be recorded during video recording, so you can see the drive location in the viewer. (Users only for GPS-module bracket)

Map



If you want to identify the location of the video in playback, click the "Map" button. Map window will be activated.

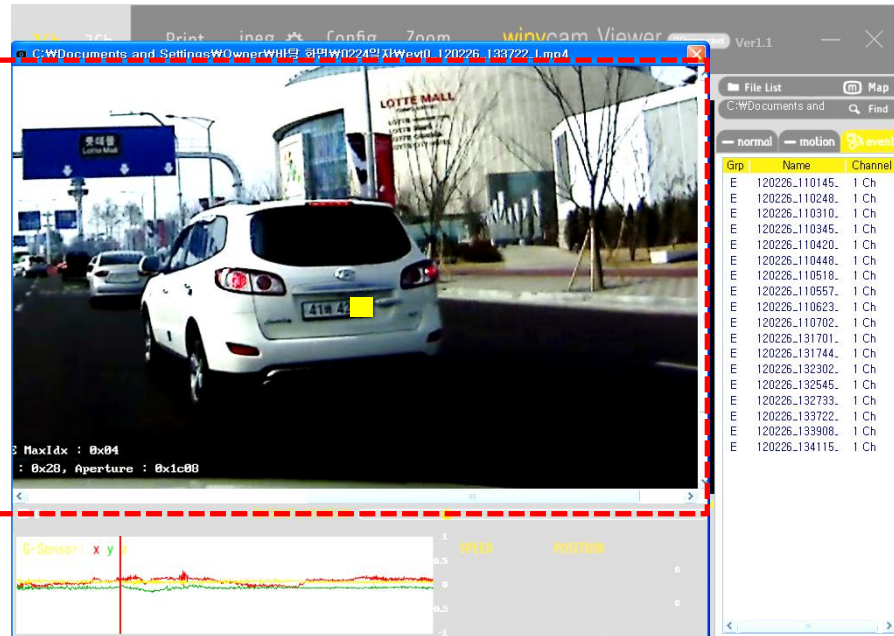
If you turn the mouse wheel, Map will zoom in/out.

[SPEED] Drive Speed

[POSITION] Latitude/Longitude location information

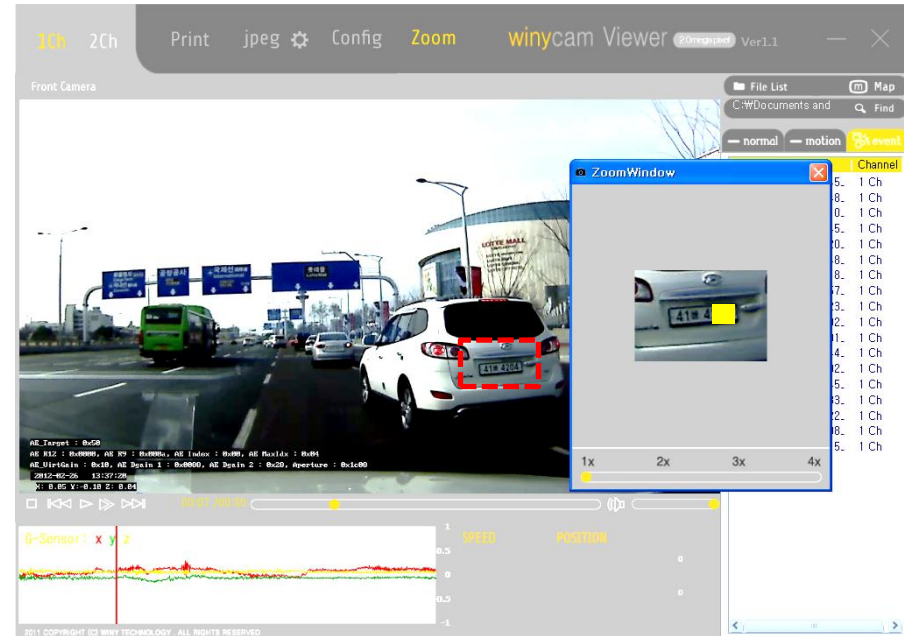
9-3. Original Viewer - Zoom

1) Expand your entire playback screen



1. Double Click on the playback screen.
 2. New playback screen will be opened.
 3. The size of playback screen will be able to be until tripled.
- ※Note: Expanded entire playback screen can not be printed out.

2) Expand part of your playback screen



1. Pause the screen.
2. Click "Zoom" on the header.
3. Drag from top left to bottom right of the particular area.
4. Expanded screen will be opened and the size of this screen able to be quadruple.

9-3. Original Viewer - Configuration

- Connect SD card to a computer, and then specify configuration. If you insert the SD card which set configuration into a black box, the configuration is automatically updated.

Configuration

Mode Setup	Driving mode Frame Rate	Time Setting	Model Name : Serial Number : Firmware Ver. :
Normal	30	2012-09-03T10:28:13	
Resolution	Parking Mode Frame Rate	Set Time?	Camera Sensor
HD(1280x720)	15	No	Sensor Initialization
Normal Recording Time	Parking Recording Mode Change	LED Lightning Setting	Contrast
1 Minute	Off	On	Brightness
Video Quality	Voice Guide Volume Level	Motion Sensitivity	Color
High-Quality	2	Normal	
G-Sensor Sensitivity	Recording Volume Level	Overwrite Function(Event/Motion)	SD Card Folder Capacity Adjustment (Movie : Motion : Event)
Normal	2	On	※ Some files would be deleted during start-up.
Car Constant Power Discharge Protection Function	Time Zone	SummerTime	
Off	Seoul, Tokyo, Yakutsk (UTC +C)	No	
TV-OUT			
PAL			

Initialization OK Cancel

9-3. Original Viewer - Configuration

Mode Setup	Selects normal recording mode or event recording mode when driving, and while event recording is set, the data by event recording mode will be stored. (Default: Normal mode)
Driving Mode Frame Rate	Sets the frame rate for driving. (Default: 30F) the higher frame rate is set, the movement image will be saved more smoothly.
Time Setting	Sets the current your time. when setting time in PC, please add travel time between the location you set time on PC and the location you apply set time to black box in a car. (PC -> Travel time -> Car). (When using GPS bracket, time setting will be automatically applied.)
Resolution	Sets the size of image resolution. HD 1280*720 (Default) / D1 720*480 / VGA 640*480
Parking Mode Frame Rate	Sets the frame rate when parking (Default: 15F)
Set Time?	The time set in [Time Setting] will be applied to black box. Only when changing the time set, select "Yes". (Default: No)
Normal Recording Time	30 seconds / 1 minute (default) / 2 minute. You can set recording time.
Parking Recording Mode Change	If there is no detection on G-sensor for over a certain time (approximately 8 minutes), it will be automatically switched to parking recording mode, but if any detection on G-sensor for over a certain time (about 10 seconds), it will be automatically switched to driving recording mode.
LED Lightning Setting	Sets the front LED display or not.
Video Quality	Sets the quality of recording images.
Voice Guide Volume Level	Sets volume level for voice guide.
Motion Sensitivity	Sets the sensitivity level of motion detection sensor.
G-Sensor Sensitivity	Sets the sensitivity level of shock detection sensor.
Recording Volume Level	Sets the volume level of the recording voice.
Overwrite Function	Deletes the oldest data and sets to overwrite them with a new file.
Car Constant Power Discharge Protection	If you set this function, you can record by a car battery even when parking in addition to driving the car. When setting 12V, the black box can work in over a constant voltage (12.5V ± 0.2), but it automatically shut down under the voltage (11.8V ± 0.3).
Time Zone	Sets the time where the user is located.
Summer Time	Sets the Summer Time.
Camera Sensor	Set contrast, brightness and color of camera, and if pressing "Sensor Initialization" button, it returns to the default.
SD card Folder Capacity Adjustment	Adjusts storage space ratio by recording folder in the entire SD card storage capacity.

9-4. Configuration Default Settings

Item	Settings	Item	Settings
Mode Setup	Normal	Driving mode Frame Rate	30
Resolution	HD (1280 x 720)	Parking Mode Frame Rate	15
Time Setting	The time setting value on PC will be output.	Set Time?	No
Normal Recording Time	1 Minute	Parking Recording Mode Change	Off
LED Lightning Setting	On	Video Quality	High-Quality
Voice Guide Volume Level	2	Motion Sensitivity	Normal
G-Sensor Sensitivity	Normal	Recording Volume Level	2
Overwrite (Event/Motion)	On	Car Constant Power Discharge Protection	Off
Camera Sensor	Contrast	Middle	
	Brightness	Middle	
	Color	Middle	
SD card Folder Capacity Adjustment (All 20 Cells)	Movie	10 Cells	
	Motion	4 Cells	
	Event	6 Cells	

10. Configuration Setting and playback video on Smartphone

* Android ONLY

Recorded video by V300HD can be played back and delete as well as setting configuration on a smartphone which support only Android.

Installation

1. V300HD can work in all Android Smartphone that support over Froyo (2.2) version.
2. Download the application of "Winycam V300HD" on Android Market.

How to use

Connect SD card to your smartphone Insert Micro SD Card to SD Card socket on your Smartphone and run the application.

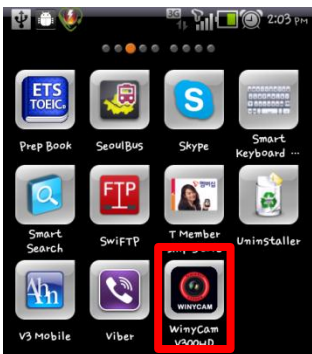
Set SD card location After run the application, message will be shown for setting SD card location. If you set first, this window will not be opened from second time.

Playback and delete a video file After mount SD card and run the application, the video file list will be shown as below picture #3. Click particular video file to playback and delete.

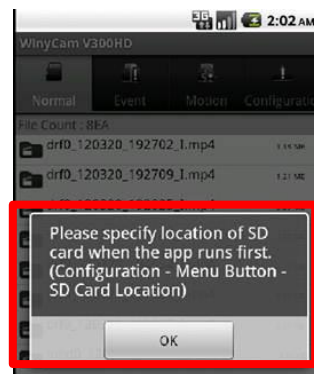
Set configuration Click "Configuration" as below picture #4, you can check current setting status and change setting value.

※ **Precaution when remove a SD card** : please remove a SD card after unmounting. If you do not, a SD card may have damage.
Menu → Setup → System → Smart Phone storage space → SD card unmounting.

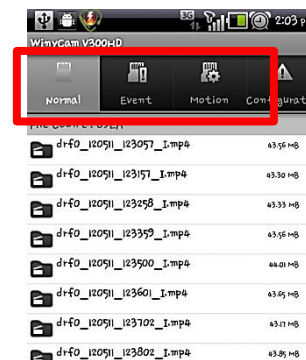
1. APP installation



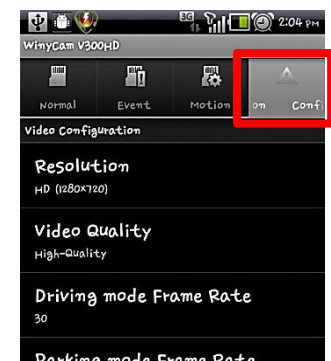
2. SD card Location setup



3. Video file list



4. Configuration setup



11. Firmware Update

Event	2011-05-05 오전 5:07
Motion	2011-05-05 오전 5:07
Movie	2011-05-05 오전 5:07
setup.cfg	2011-12-13 오후 9:20
V300HD.dir	2011-12-13 오후 9:22
WINYCAM_V300_111213.bin	2011-12-13 오후 9:18

• Firmware Update

1. Remove the SD card from the black box after turning off the power completely.
2. Copy the firmware file to the top position of the files in the SD card after connect the SD card to the PC.
3. Boot the power in the black box after inserting the SD card into a black box,
4. If the firmware file is automatically recognized, start to update the firmware after the voice guide to indicate the start of the firmware.
5. When the firmware update is completed, the firmware file stored in the SD card is automatically deleted and the black box is rebooted after the voice guide to indicate the completion of the firmware update.

• Firmware File Format

File name will be as WINYCAM_V300_yymmdd.bin - yymmdd will change depending on year/month/date of the firmware version.

12. SD Card Format

• How to format the card if the SD card has recognition error

1. Turn on the power while pressing the "REC" button.
2. While you press "REC" button, format will start.
3. When you press "REC" button briefly within format stand-by time, the SD card will be formatted and rebooted.

* If you press "REC" button a little longer, it will be rebooted and even if stand-by time is over.

13. Specifications

Item	Specifications	Item	Specifications
Camera	2 Mega pixel, View angle (150 degrees)	Video Output	NTSC Composite
G-Sensor	3-axis acceleration G Sensor built-in	Voice Recording	Microphone built-in
GPS	An external GPS module (optional)	Voice Guidance	Speaker built-in
Video Compression	H.264/AVC	Recording Media	Micro SD card (SDHC)
Audio Compression	AAC	Power Input	DC 12V ~ 24V Free Voltage
Recording Channel	1 Channel	Secondary Battery	Lithium polymer battery built-in
Recording Resolution	HD (1280x720), D1 (720x480), VGA(640x480)	Size/Weight	107(W) x 47(H) x 38(D)mm / ARO 62g
FPS	30/25/20/15/10/5FPS selectable	Storage Temperature	-10 ~ +65℃
Image Quality	Highest quality (bitrate 8Mbps – HD Standard) High quality (bitrate 6Mbps – HD Standard) General quality (bitrate 4Mbps – HD Standard)	Operating Temperature	-5 ~ +55℃

14. Recordable Time

- Below table is Recordable Time by setting value at "SD card Folder Capacity Adjustment" Based on 8GB with high resolution

Recording mode	Folder Capacity Adjustment (%)	Record Time(Sec)	Frame Rate (FPS)		Record Time (Min)		The number of files (files)	
			Drive On	Parking On	Drive On	Parking On	Drive On	Parking On
Normal	50	60	30		90		90	
Event	30	30	30	15	52	99	104	198
Motion	20	30	15	15	66		131	
Total	Available to record 3hours ~ 3hours 20minte based on 8GB SD card							

Warranty

■ Warranty

1. The products are manufactured through the strict quality control and inspection process.
2. The defect occurring in normal use of user within the warranty period will be repaired free of charge.

■ Warranty Details (Conditions)

Free Service: The defect occurring under normal use within the warranty period from the date of purchase will be repaired free of charge.

Paid Service: If the warranty period has passed.

Even within the warranty period, following cases shall be repaired at cost:

Failures caused by natural disasters (fire, lightning, flood damage, etc.)

Failures caused by carelessness using (drop, flooding, shock, breakage, excessive operation)

Failures caused by the malfunction of power in use and connected equipment.

Failures caused by any changes of a product and repaired from an unauthorized service center.

Body	Accessory	
1 Year (from purchase date)	Within 6 months	SD card, Bracket, Car cigar jack
	Excluded warranty	Card leader, Vided Cable (cut user's mishandling)

- Accessories are not repaired free of charge. The products other than the warranty period shall not be replaced free of charge.
Important data shall be backed-up in a safe place and we shall not be responsible for any loss of the data stored in the product.

Date : D. M. Y.

Distributor :

Customer Service

Manufacture : 303-305, Bucheon Technopark, #365, Samjeong-dong, Ojeong-gu, Bucheon-si, Gyeonggi-do , Korea 421-741

Please download the user manual, program from below website

<http://winycam-eng.com>

WinyTechnology Co., Ltd.